



**MUM, I'M ALIEN
PREGNANT
SUSTAINABILITY
REPORT**

CONTENTS

✦ Introduction

✦ Carbon Emissions

✦ Waste

✦ Carbon Handprint

✦ Learnings



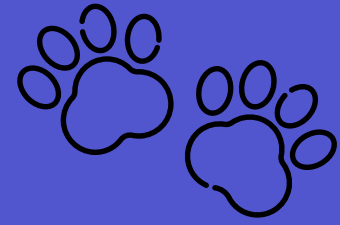
INTRODUCTION

Mum, I'm Alien Pregnant is an independent and original sci-fi body-horror comedy film shot in Aotearoa, New Zealand in 2024. Directed by THUNDERLIPS and Produced by Hot Candle Wave.

Early in the development of this film, the producers decided that sustainability would be a priority for this project, and a sustainability manager was brought onto the project during development. The following report details the sustainability initiatives undertaken by the production's crew, producers, and sustainability managers.



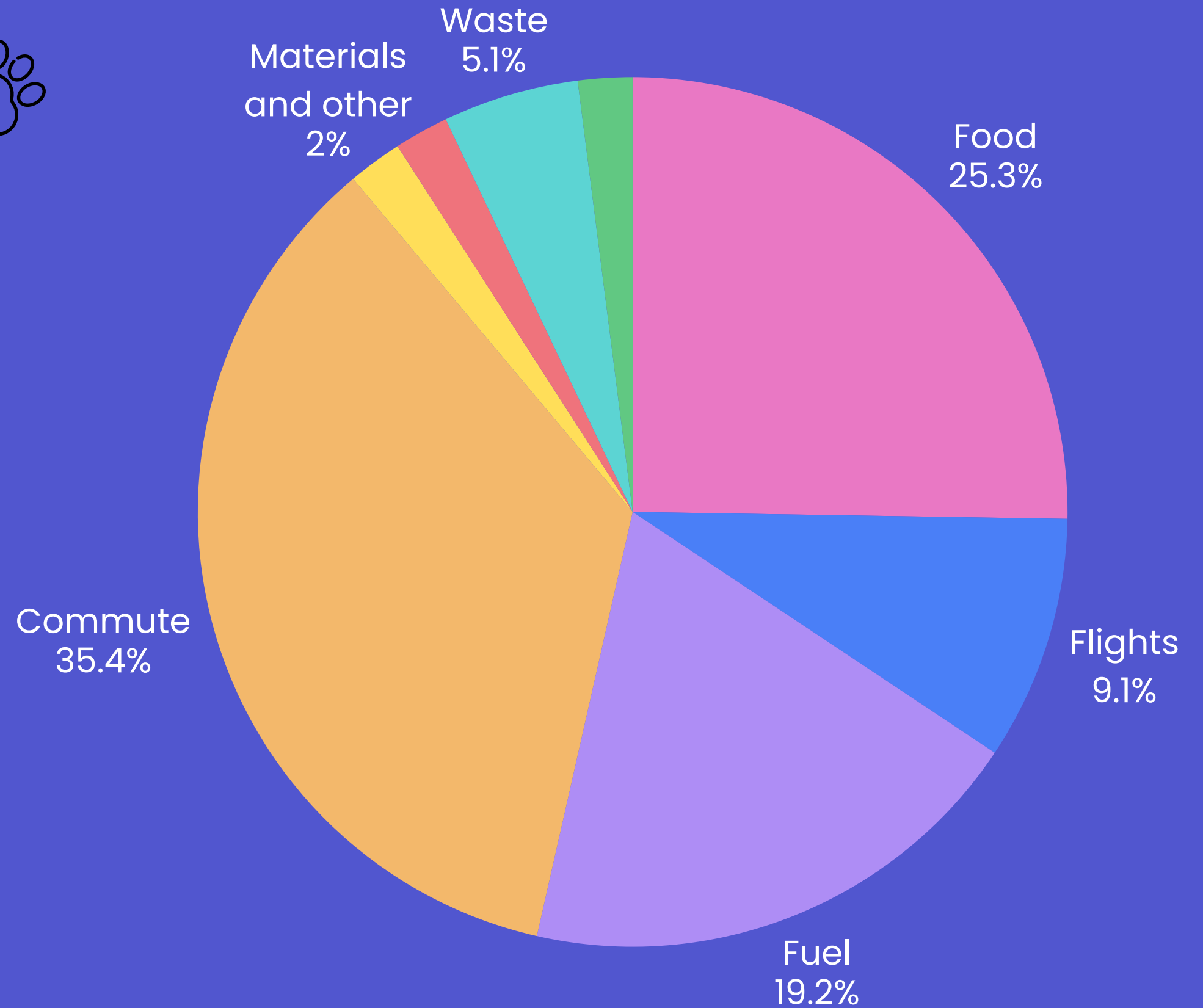
CARBON FOOTPRINT



TOTAL

30.6 TONNES
CO₂E

APPROXIMATELY 20 T CO₂E
LESS THAN OUR PROJECTED
EMISSIONS ACCORDING TO THE
GREENLIT CARBON
CALCULATOR.



• ESTIMATES BASED ON AVAILABLE DATA.

CARBON REDUCTION

CARPOOLING

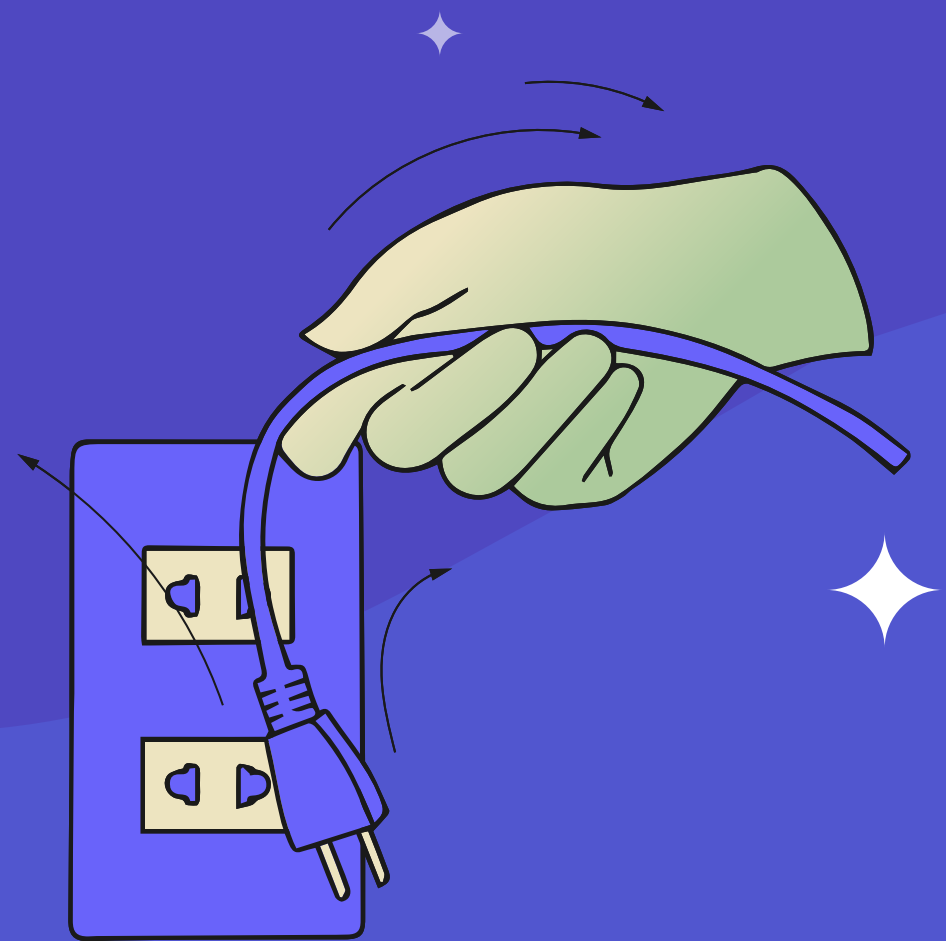
We encouraged carpooling through:

- Setting up a carpooling channel in Slack.
- Making a carpooling plan with people who live in the same area mapped out and suggested to travel together, particularly through prep.

We had some uptake. While carpooling presents a lot of challenges, we recommend that other productions encourage and incentivise this strategy as commuting is often a major source of emissions.



CARBON REDUCTION



PLUGGING IN

In NZ when you plug into grid power, 85–88% of the electricity you're using is from renewable resources (it's the same no matter which company you're with or where you are). This means that plugging into grid power instead of running diesel and petrol generators is a massive carbon win. On Mum, I'm Alien Pregnant Sustainability, LX and locations worked together and made a plan to plug into power at the majority of locations, for at least a portion of our power needs.

RIGHT-SIZING

Often on productions the generators used are over-spec for the electricity required. On Mum, I'm Alien Pregnant this was discussed with key teams and our generator was downsized for part of the shoot.

CARBON REDUCTION

CREW EDUCATION

Crew were educated on a wide variety of carbon reduction strategies including:

- Efficient driving
- Efficient heating and cooling
- Power reduction strategies
- Transport reduction strategies, i.e. meeting online
- Right-sizing of vehicles and generators.

This education happened from prep to wrap through sustainability videos, newsletters, posters and departmental hui.

Posters and newsletters also included waste reduction and general sustainability information.

ALIEN PREGNANT SUSTAINABILITY NEWSLETTER
Raupī, Raupā, Rauora - to cherish, to labour, to restore.
Greenlit Aotearoa

NAU MAI, HAERE MAI!
Kia ora tātou, ko Rose Archer tōku ingoa. I'm the sustainability manager on Mum, I'm Alien Pregnant. I am excited to work with you all and keen to hear all of your questions and ideas, big or small, about how we can make our production more sustainable.
✉ rose.c.archer@gmail.com

EMISSIONS REDUCTION TIPS

- BATTERY PACKS**
Battery tech is improving all the time - is there a battery that might work for your kit? [This article](#) reviews goes into a bit more detail about some of the options and what to look out for.
- PLUGGING INTO POWER**
The NZ grid is 80-85% renewable so plugging in instead of using generators is a huge sustainability win. We will take every opportunity to plug into power on this production.
- POWER EFFICIENCY**
 - Have someone allocated to turn off equipment and lights when not in use.
 - When replacing kit, prioritise energy efficiency.
 - Heating tips for office and home:
 - Workshops: Fans or radiant heaters.
 - Smaller spaces: column heaters including oil and oil free column heaters.
 - Heat pumps: are ideal for energy efficiency and best run at 18-21 degrees.
- DRIVING EFFICIENCY**
Save money and emissions by implementing fuel efficient driving practices, see more on the next page.
Reduce transport emission by:
 - WFH and meet online where possible.
 - Carpool - if you're interested in carpooling let me know rose.c.archer@gmail.com

THE SUSTAINABLE DRIVING GAME
Reduce your footprint and your fuel bill.

MAINTAIN TO SUSTAIN
Keep your vehicle serviced, change filters when due, and keep that engine running sweetly.

TAKE A LOAD OFF
Weight increases fuel use - reduce the load. Particularly important for items attached to the outside of your vehicle, which create more air resistance!

AVOID THE CON
Air conditioning can use up to 10% of your fuel - use it wisely!

PUMP IT UP
Check your tyres regularly! Worn tread and low tyre pressure cause more wear & tear, and accidents, and also increase fuel consumption!

KNOW YOUR LIMITS
Limit these to reduce fuel use.

- Idling longer than 10 seconds wastes fuel
- Speed - an increase of 10km/h can hugely decrease efficacy
- Short trips on a cold engine - combine trips to improve your fuel efficiency.

SMOOTH MOVES
Driving smoothly and avoiding both sharp acceleration and sharp braking saves fuel.

DID YOU KNOW?
GenLess is stacked with tools and stories to make climate action easy. The [Efficient Driving Tips](#) page gives advice on everything, from carbon emissions ratings and the right tyre pressure for your vehicle to more fuel saving tips. Check out their site at genless.govt.nz

Play the game! - can you increase the no of KMs on your odometer between fills? When you fill:

- Fill the same amount of litres
- Note your odometer reading. See how much you can improve your fuel efficiency! Help your wallet and the planet.

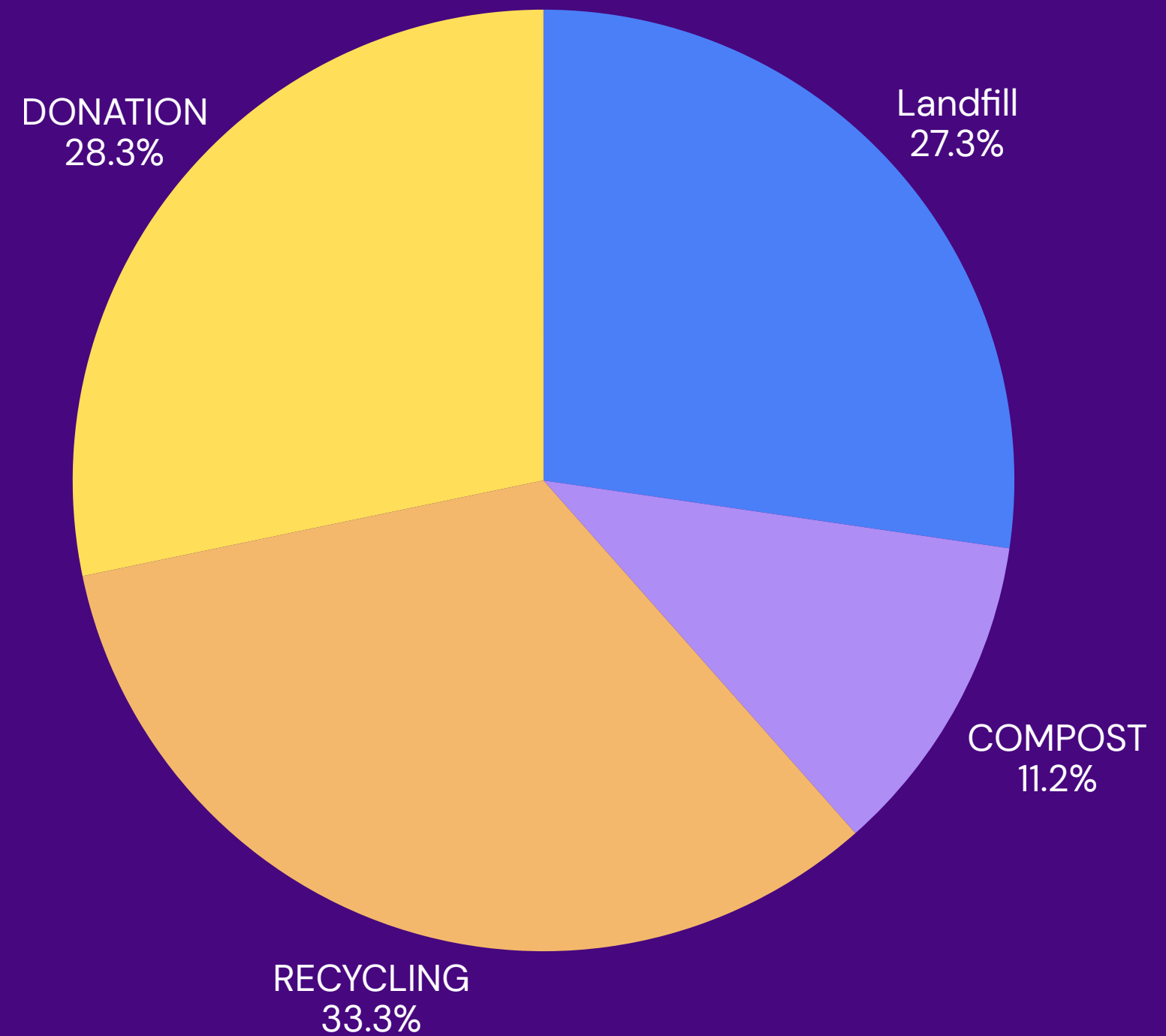
WASTE

Our waste footprint and reduction strategies





**TOTAL WASTE
39,032.00 LITRES.**



- **THIS WASTE FOOTPRINT COVERS ON-SITE SORTING ONLY — NOT FACTORING IN THE DIVERSION RATES OF OUR VENDORS.**

REDUCTION

FOUR BINS

Soft plastic, compost, mixed recycling and landfill available on set and at the production office.



CONSTRUCTION RECYCLING

Construction waste was recycled with Green Gorilla through the use of Green Gorilla flexi bags.



REDUCTION

SPECIALTY RECYCLING STREAMS

Electronic waste, battery recycling and secure paper recycling was all offered at the office and on set.



ZERO WASTE HUB

The art department worked with the Glen Innes zero waste hub to borrow a number of items for the shoot. This saved the production money on both purchases and disposal and also benefited the zero waste team, as many items were improved (i.e. fixed or painted) by our crew for staging.



REDUCTION

SALES

A number of items were sold, bringing hundreds of dollars back into the production budget. This number could be higher if there was more time available for items to be listed and sold to the highest bidder.



ART RECYCLING

Art materials were sorted to be recycled at Waitākere refuse centre. It is unclear, however, whether the sorting was undertaken correctly by crew and staff at the centre. There is an established culture of dumping items at the end of a shoot rather than fully sorting, and ongoing work is needed to implement effective material recycling and reuse.



REDUCTION

DONATIONS

The art department sourced through op shops and crew. At the end of shoot, items were donated to:

- op shops
- community theatre groups
- a local kindergarten
- families through Facebook Marketplace.

FOOD DONATIONS

Each day leftover food was donated to a local food rescue program.

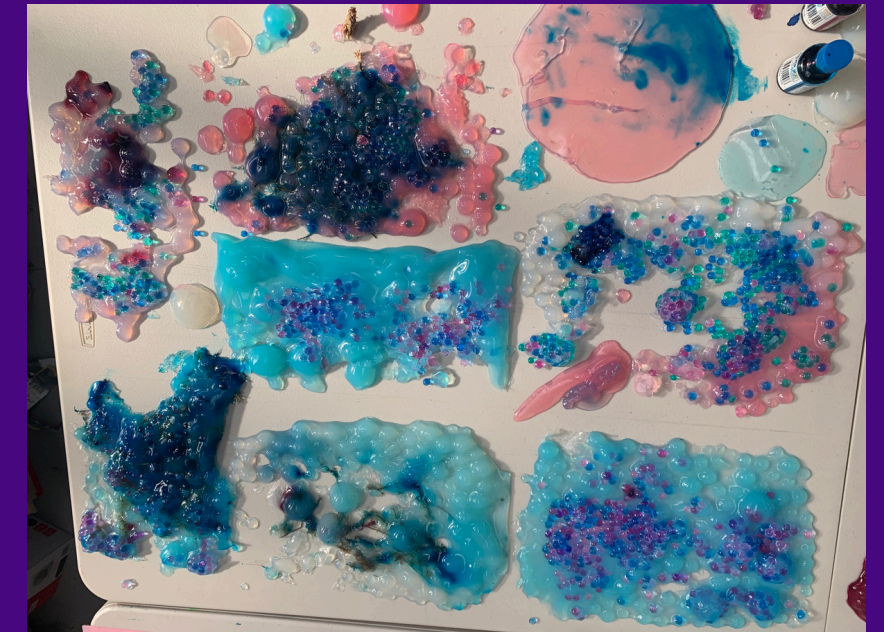


SLIME

This film had a lot of slime. The art team worked really hard to find as many compostable options as possible for all the slimes in this film. Some materials that were used include:

- Kombucha SCOBYs
- Yoghurt
- Compostable moisture beads
- Agar

The majority (around 80%) of slime was able to be commercially composted at the end of the production.





HANDPRINT

THESE ARE THE CONTRIBUTIONS WE MADE TO
BROADER SUSTAINABILITY IN OUR INDUSTRY THAT
ARE NOT EASILY MEASURED.



WE PROVIDED VIDEOS TO GREENLIT
FOR SOCIAL MEDIA.



SUSTAINABILITY MANAGER HOURS
TOWARDS DEVELOPING LARGER
INDUSTRY TOOLS AND STRATEGY
THROUGH GREENLIT.



OUR SUSTAINABILITY MANAGER AND
PRODUCER TOOK PART IN A
WEBINAR TO TALK ABOUT THE
SUSTAINABILITY EFFORTS WE
UNDERTOOK.



THIS REPORT WILL BE RELEASED
THROUGH GREENLIT FOR OTHER
LOCAL PRODUCTIONS TO LEARN
FROM.

LEARNINGS AND SUGGESTIONS



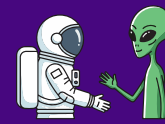
There was a really collaborative crew culture on this production, supported by 9-hour work days and a culture of care cultivated by the production team. This had a really positive impact on people's engagement with sustainability.



Crew still need more education on waste and emission reduction. Things still end up in the wrong bins sometimes.



While we had some uptake of carpooling, we recommend that other productions continue to explore ways to incentivise and encourage this further.



Many crew reported how much they enjoyed working with a sustainability manager and felt supported to improve the ways they were working.

IT WAS AWESOME – MORE LOCAL PRODUCTIONS SHOULD DO IT.